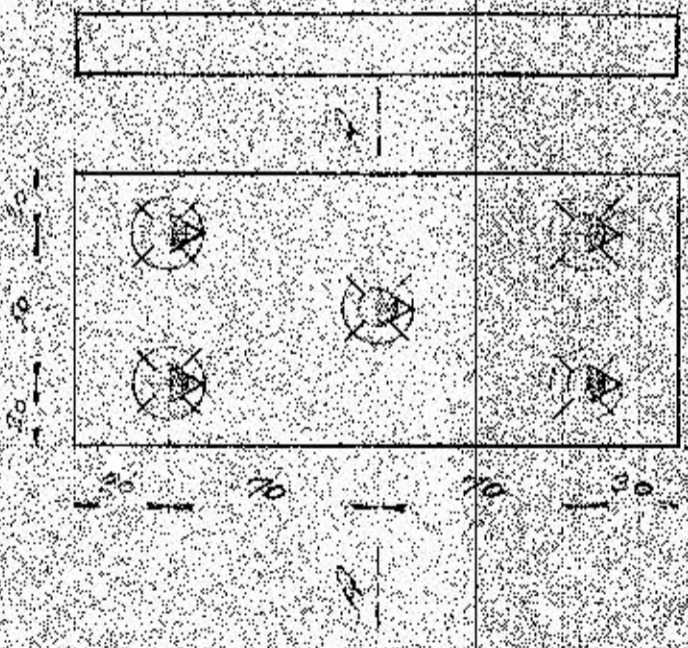
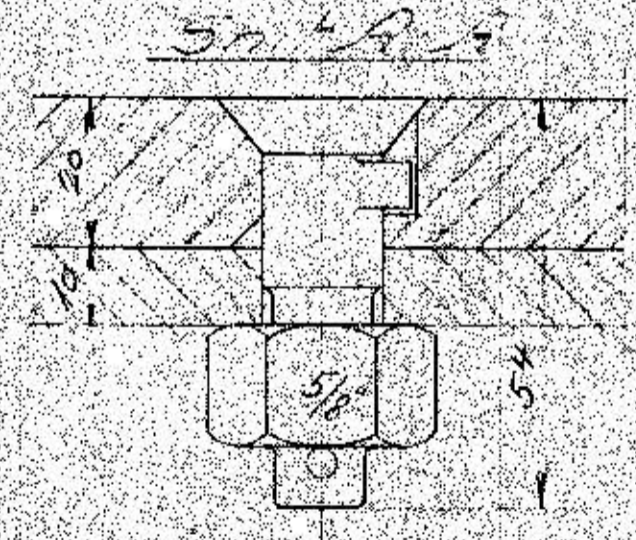
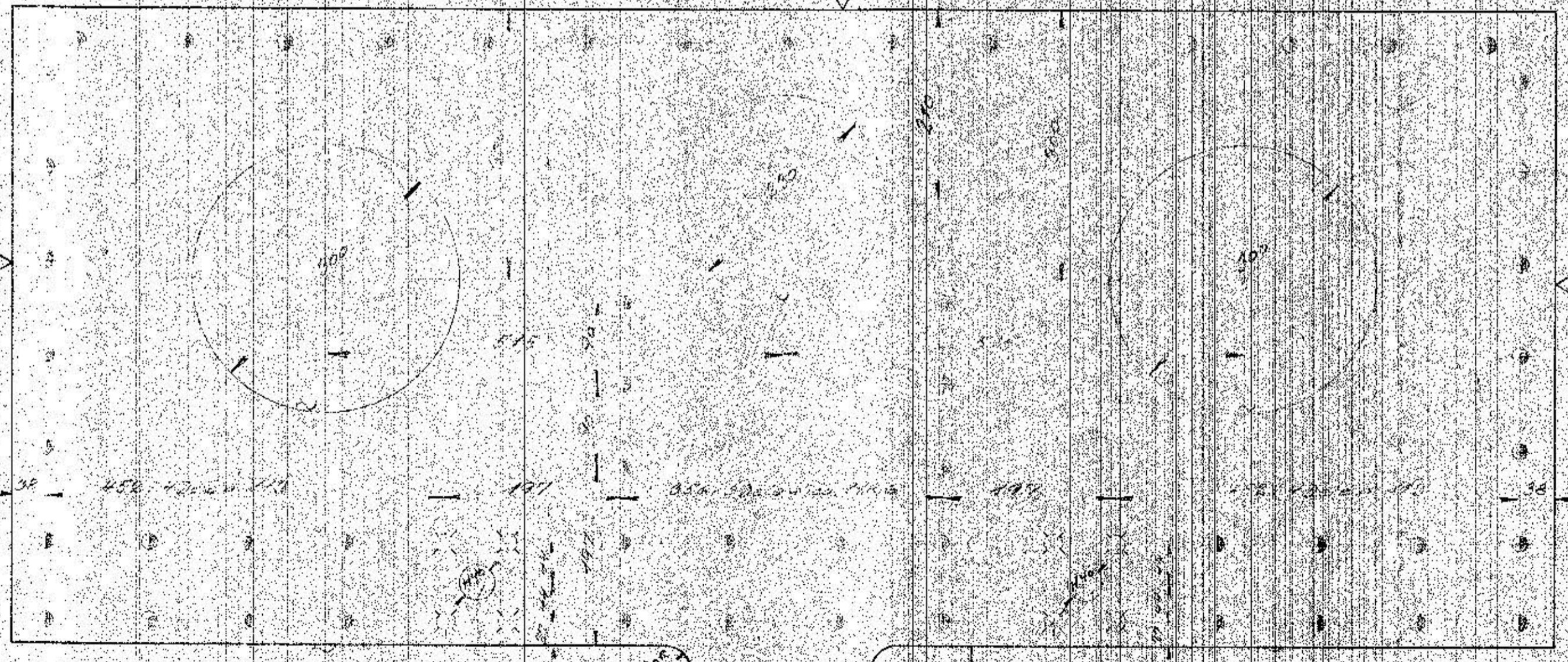
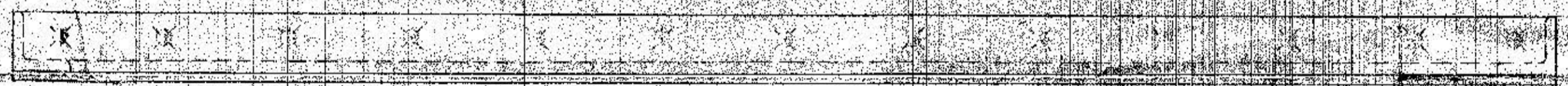
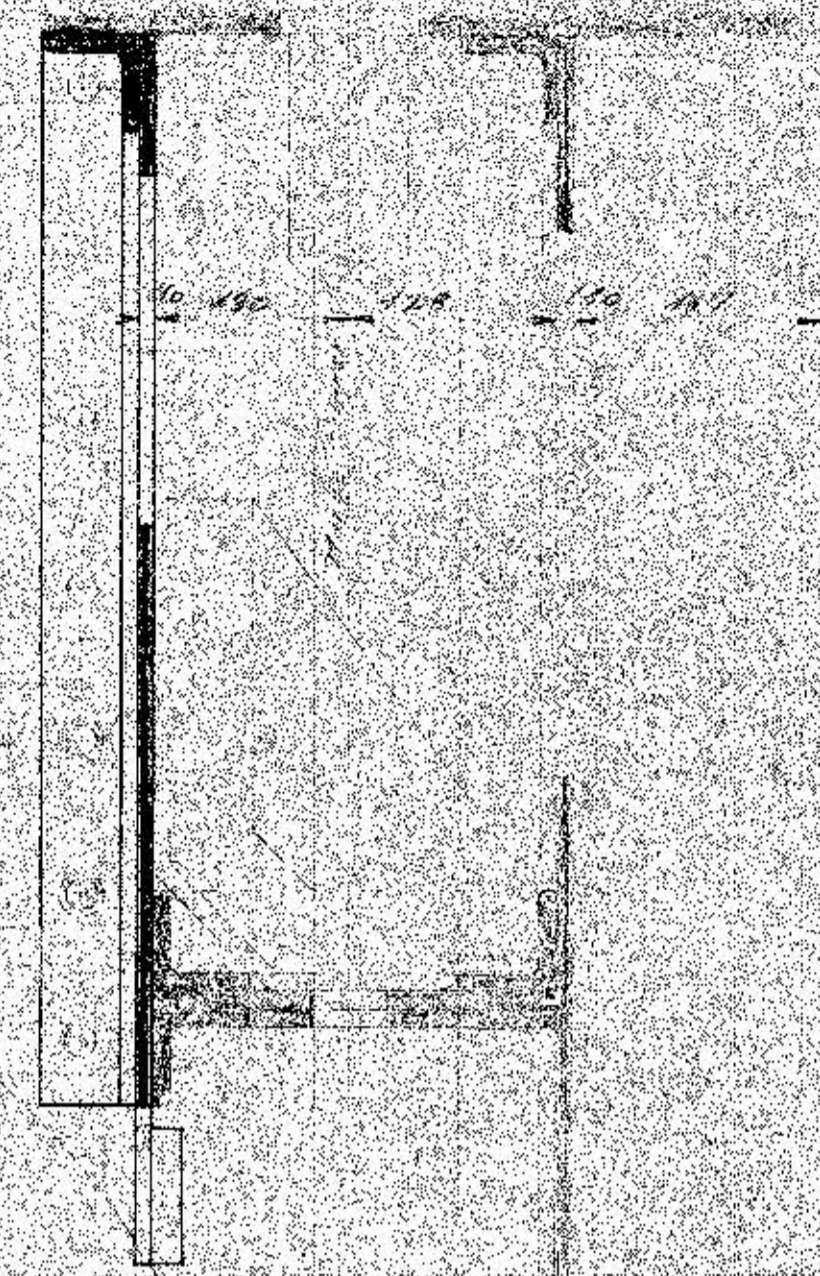
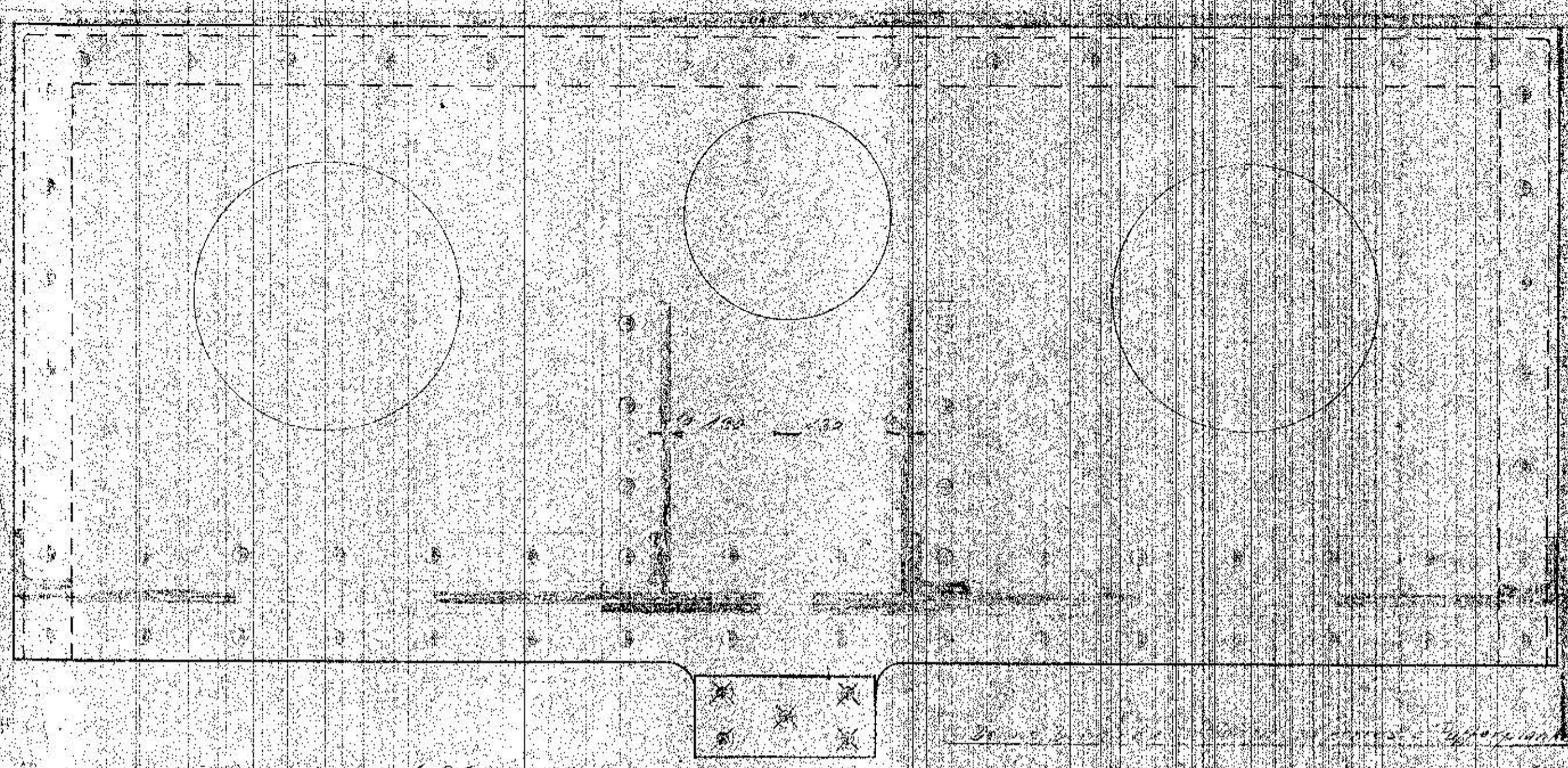


ARKIV	NO. 128L-9.04
PROJEKT	128L-9.04
BYGGER	128L-9.04
BYGGER	128L-9.04
BYGGER	128L-9.04
BYGGER	128L-9.04



Nederste Rammeforbindelse ved  
 Pufferplade. Dør af 40 HK. Materialer  
 J. J. J.

1:2.5  
 1:5  
 128L-9.04  
 9/8.1933